

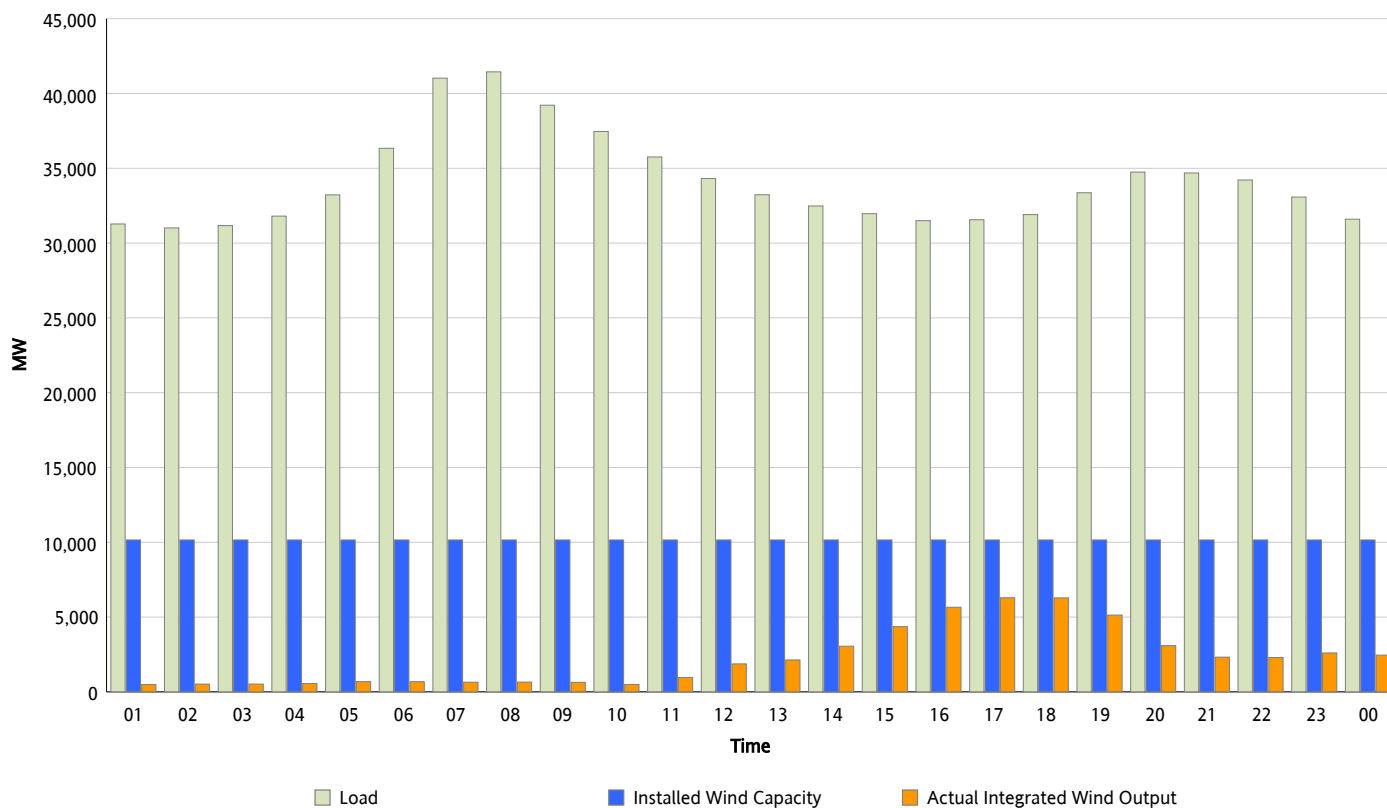


ERCOT Grid Operations

Wind Integration Report : 03/01/2013

Peak Load	41,444 MW
Load Peak Hour (HE)	08
Wind Over Peak	654 MW
Wind Record 02/09/13	9,481 MW
Max Wind Value*	6,478 MW
Wind Peak Time	17:46
Wind Integration %	20.12 %

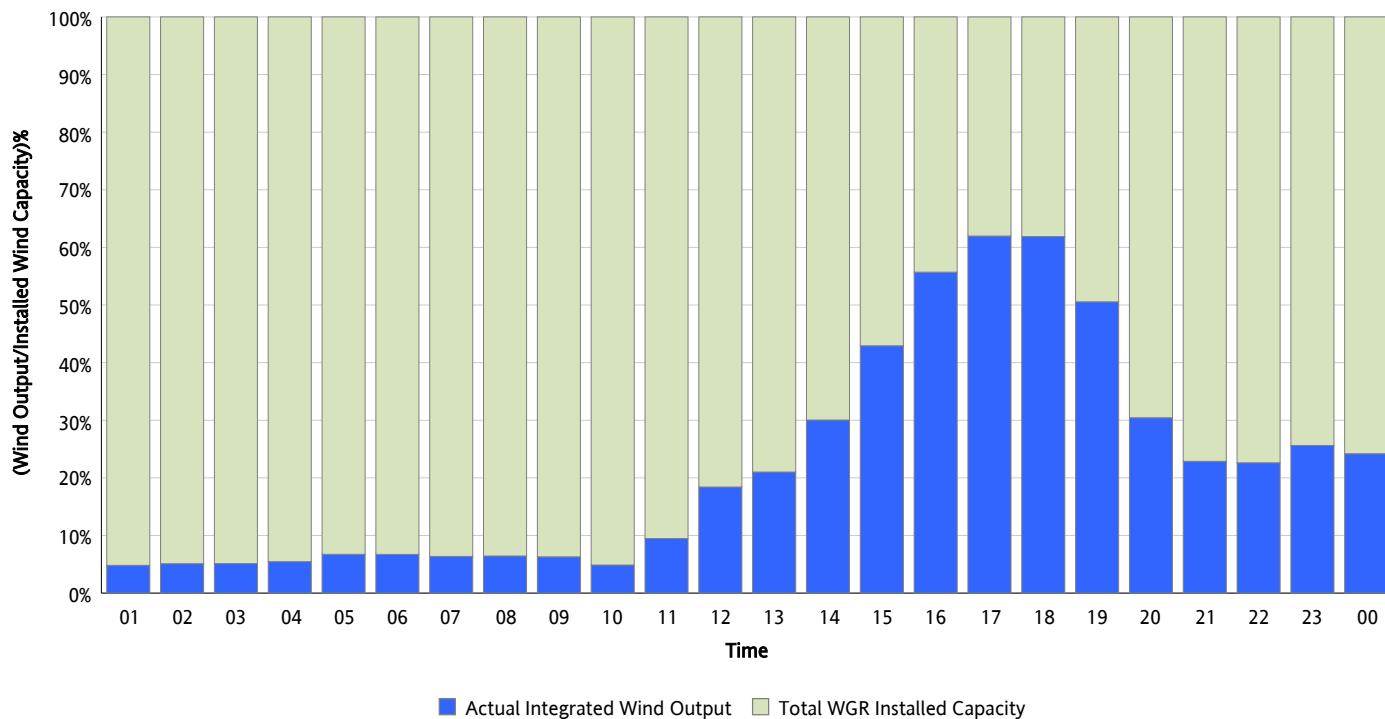
Hourly Average Actual Load vs. Actual Wind Output
03/01/2013



* Wind Record and Wind Max represent instantaneous values and the rest of the values are integrated over the hour

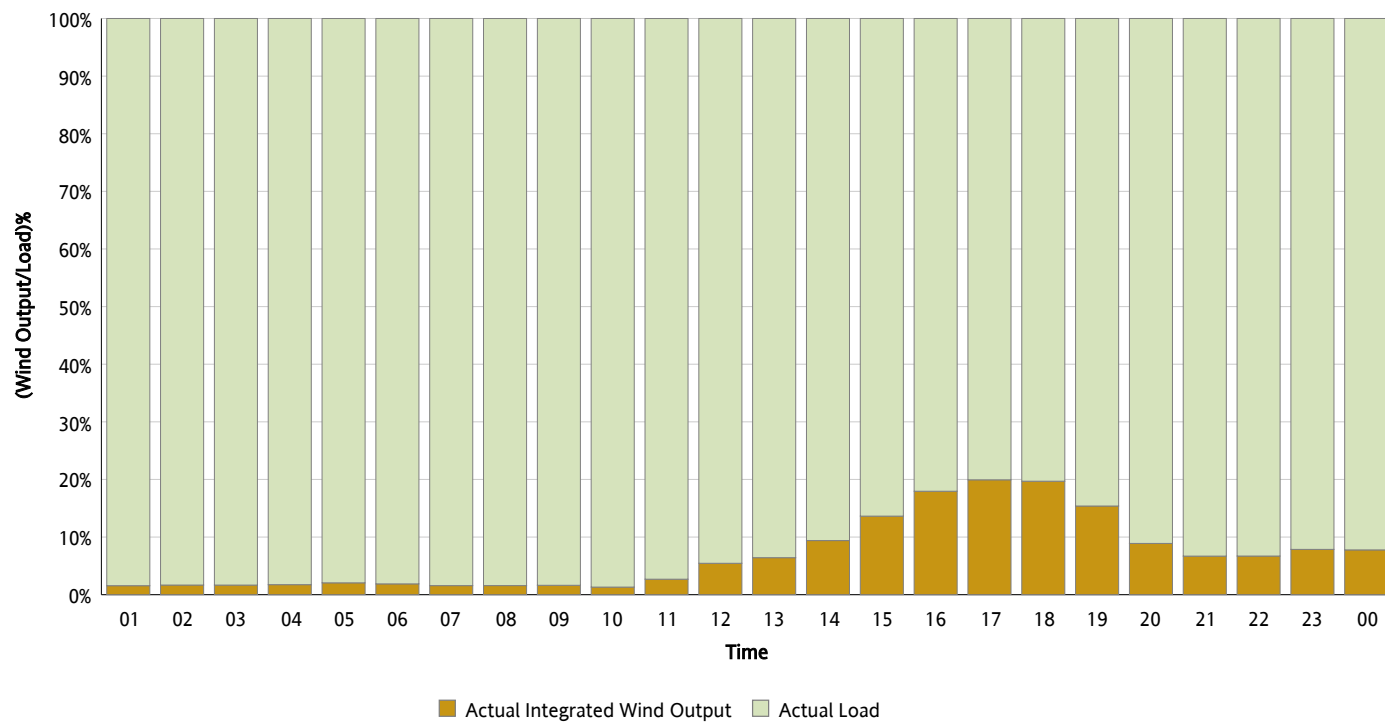
Actual Wind Output as a Percentage of the Total Installed Wind Capacity

03/01/2013



Actual Wind Output as a Percentage of the ERCOT Load

03/01/2013



ERCOT Load vs. Actual Wind Output

02/22/2013 - 03/01/2013

